

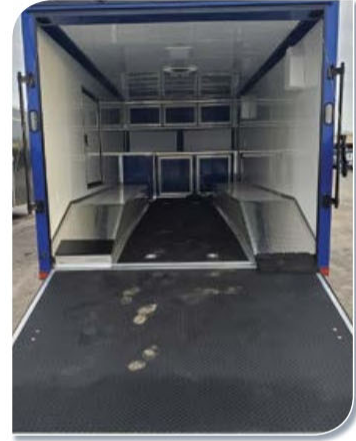


Enclosed Cargo Trailer Manufacturer



Rock Solid Cargo is a manufacturer of enclosed cargo trailers located in Douglas, Georgia. We are locally owned and operated and have assembled the best possible team together. We have many years of experience together in the industry and provide great service to our dealers and their customers. We only sell to authorized dealers and have a great dealer base nationwide that are ready to service your trailer needs. We have brand new state-of-the-art facilities where we produce the trailers from start to finish. We provide a 5-year structural warranty on our trailers and we stand behind our products 100%. Our goal is to provide the finest trailers at the best possible price.

RockSolid Cargo Gallery



Single Axle Cargo Trailer



Available in:

6' Wide (6' x 10' / 6' x 12' / 6' x 14')

Standard features on right side of page

7' Wide (7' x 12' / 7' x 14')

Standard features on right side of page

7' additions, include;

- 16" on Center Cross Members
- 2 5/16" Coupler
- 4" Steel Tube Main Frame Rails



Single Axle Standard Features

- 24" on Center Cross Members
- 24" on Center Tubing Roof Members
- 16" on Center Tubing Sidewalls
- 2000 lb. A-Frame Jack with Sand Foot
- 2" Coupler
- 3" Steel Tube Main Frame Rails
- 36" Side Door with Flush Lock
- .024" White Aluminum Metal
- Screwed Exterior
- Interior Height 75"
- 3/4" Plywood Floors
- 3/8" Plywood Walls
- (1) 12volt LED Dome Light
- Aluminum Fenders
- Galvalume Roof
- Non-Powered Roof Vent
- 24" Stone Guard
- 2990lb. Drop Leaf Spring Axles
- Flat 4 Pigtail on Units Without Brakes
- Ramp Door with Flap
- E-Z Lube Hubs
- Door Hold Back
- V-Nose with ATP
- LED Lights
- Lionshead White Mod Wheels
 - With Lifetime Structural Warranty
- Radial Tires
 - With Lionshead 1•2•5 Lifetime +
 - 1** Year (First Year) "No Excuses Guarantee"
 - 2** Year Complimentary
 - Roadside Assistance
 - 5** Year Warranty on Radial ST Tires
 - Lifetime** Structural Warranty on
 - All Wheels
 - + NitroFill in all Tires

Tandem Axle Cargo Trailer



Available in:

6' Wide (6' x 10' / 6' x 12' / 6' x 14')

Standard features on right side of page

7' Wide (7' x 10' / 7' x 12' / 7' x 14' / 7' x 16' / 7' x 18' / 7' x 20' / 7' x 24')

Standard features with following upgrades;

- Models 16' and over include 6" tube steel main frame

8' Wide (8' x 12' / 8' x 14' / 8' x 16' / 8' x 18' / 8' x 20')

Standard features with following upgrades;

- 6" tube steel main frame on all models
- Interior height 78"

8.5' Wide (8.5' x 14' / 8.5' x 16' / 8.5' x 18' / 8.5' x 20' / 8.5' x 22' / 8.5' x 24' / 8.5' x 26' / 8.5' x 28' / 8.5' x 30' / 8.5' x 32')

Standard features with following upgrades;

- (4) 5000 lb. D-Rings
- ATP covered stepwell
- Heavy duty ramp door with flap
- No show beavertail on 16' and above
- 6" tube steel main frame on 24' and below
- 8" tube steel main frame on 26' and above
- 5,200 lb. drop leaf axles with electric brakes, triple tube tongue on 26' and above
- One-piece aluminum roof on 30' and above
- Interior height 78"



Tandem Axle Standard Features

- 16" on Center Cross Members
- 24" on Center Tubing Roof Members
- 16" on Center Tubing Sidewalls
- 2000 lb. A-Frame Jack with Sand Foot
- 2 5/16" Coupler
- 36" Side Door with Flush Lock
- 32" Side Door on 10'
- .024" White Aluminum Metal
- Screwed Exterior
- Interior Height 75"
- 3/4" Plywood Floors
- 3/8" Plywood Walls
- (1) 12volt LED Dome Light
- Aluminum Fenders
- Galvalume Roof
- Non-Powered Roof Vent
- 24" Stone Guard
- V-Nose with ATP
- LED Lights
- 3500 lb. Drop Leaf Spring Axles
- Electric Brakes (Both Axles)
- Ramp Door with Flap
- E-Z Lube Hubs
- Door Hold Back
- 7 Way Bargman Plug
- 4" Steel Tube Main Frame Rails
- Lionshead White Mod Wheels
 - With Lifetime Structural Warranty
- Radial Tires
 - With Lionshead 1•2•5 Lifetime +
 - 1** Year (First Year) "No Excuses Guarantee"
 - 2** Year Complimentary
 - Roadside Assistance
 - 5** Year Warranty on Radial ST Tires
 - Lifetime** Structural Warranty on
 - All Wheels
 - + NitroFill in all Tires

Gooseneck Cargo Trailer



All Goosenecks are 8.5' Wide
38' - 52' Include Standard Features

(3) 5,200 lb. torsion axles with electric brakes



22' - 36' Gooseneck Standard Features

- 16" on Center Cross Members
- 16" on Center Tubing Roof Members
- 16" on Center Tubing Sidewalls
- Dual Landing Gear
- 2 5/16" Coupler
- 48" Side Door with Flush Lock
- 8" Tubing Main Frame
- (1) Aluminum Ramp Door Handle
- .030" White Aluminum Metal
- Screwed Exterior
- Interior Height 84"
- 3/4" Plywood Floors
- 3/8" Plywood Walls
- (2) 12volt LED Dome Light
- Access Door in Riser Face
- (4) 5000 lb. D-Rings
- Aluminum Fenders
- Galvalume Roof
- (2) Non-Powered Roof Vent
- Anodized Front Covers
- ATP Covered Stepwell
- 16" Flap on Ramp Door
- (2) 5,200 lb. Torsion Axles with E.B.
- LED Lights
- 7 Way Bargman Plug
- 6' No Show Beavertail
- Heavy Duty Ramp Door
- Door Hold Back
- Front Riser Enclosed by ATP
- 30' and Above Have a One Piece Roof
- Lionshead White Mod Wheels
 - With Lifetime Structural Warranty
- Radial Tires
 - With Lionshead 1•2•5 Lifetime +
 - 1** Year (First Year) "No Excuses Guarantee"
 - 2** Year Complimentary
 - Roadside Assistance
 - 5** Year Warranty on Radial ST Tires
 - Lifetime** Structural Warranty on
 - All Wheels
 - + NitroFill in all Tires

Special Packages



Electrical Package:

- 60 Amp Box with Lifeline
- (2) 2' Flat Panel LED 110-Volt Lights
- (2) Receptacles
- (1) Switch



Motorcycle Package:

- Pair of Fold Down Stabilizer Jacks
- (6) Floor Mount D-Rings
- Aluminum Wheels
- 2 Way Aluminum or Black Sidewall Vents
- Choice of 24" Anodized, ATP or Colored Metal Sides and Rear



Black Out Package:

- All Black Trim
- Black ATP Stoneguard and V-Nose
- Black ATP Fenders
- Black ATP Stepwall on 8.5' Wides
- Black Bar Locks on Rear



Special Black Out Package:

- All Black Trim
- Black ATP Stoneguard and V-Nose
- Black ATP Fenders
- Black ATP Stepwall on 8.5' Wides
- Black Bar Locks on Rear
- Aluminum Wheels with Black Inlay
- Black 2-Way Sidewall Vents
- Delete Roof Vent and Frame



Race Package:

- RTP Floor
- RTP Ramp and Flap
- White Metal Walls
- White Metal Ceiling
- Base Cabinets in Front
- Overhead Cabinets in Front
- (2) Recessed 500-watt Quartz LED Lights
- (2) 12-Volt Rear LED Exterior Loading Lights
- Electrical Package

Standard Colors

Actual colors may vary from samples shown. Actual color chips available upon request.



Specialty Colors



Common Options:

- Additional Height
- Reduced Height
- 60" Triple Tube Tongue
- 3,500 lb. Torsion Brake Axles
- 5,200 lb. Drop Spring Brake Axles
- 5,200 lb. Torsion Brake Axles
- 7,000 lb. Drop Spring Brake Axles
- 7,000 lb. Torsion Brake Axles
- Spare Tire Mount
- Radius Flat Front
- Slant V-Nose with ATP
- Fold Down Stabilizer Jacks
- Scissor Jacks
- Wall Mount D-Rings
- Floor Mount D-Rings
- Wall E-Track
- Floor E-Track
- Silver Mod Wheels
- Black Mod Wheels
- Aluminum Wheels
- Steel Transition Flap
- Bar Lock On Side Door
- 48" Side Door
- Concession Doors and Windows
- Escape Doors
- Wire and Brace for A/C
- 13,500 BTU / 15,000 BTU A/C with Heat Strip
- 2-Way Sidewall Vents
- .030" Metal
- .040" Metal (Black and White)
- .050" Metal (Black and White)
- Two Tone Color Options
- Semi-Screwless Exterior
- Ladder Racks
- 24" ATP Sides and Rear
- Therma Cool Ceiling
- Black and White Floor Tile
- ATP Floor
- RTP Floor
- RTP Ramp and Flap
- Metal Walls and Ceiling
- White Vinyl Walls and Ceiling
- Raw Luan Ceiling
- Wall and Ceiling Insulation
- Base Cabinets
- Overhead Cabinets
- Dual LED Taillights
- 12-Volt LED Dome Lights and Switch
- Double Rear Doors
- Vertical and Horizontal Windows
- RV Side Door with Window and Screen
- 5' Ramp Door in V-Nose
- Maxair Vent Cover
- One Piece Aluminum Roof
- Recessed Tire Compartment
- Power Awnings
- Electric Tongue Jack
- 10" Bogey Wheels
- 12-Volt Exterior Loading Light